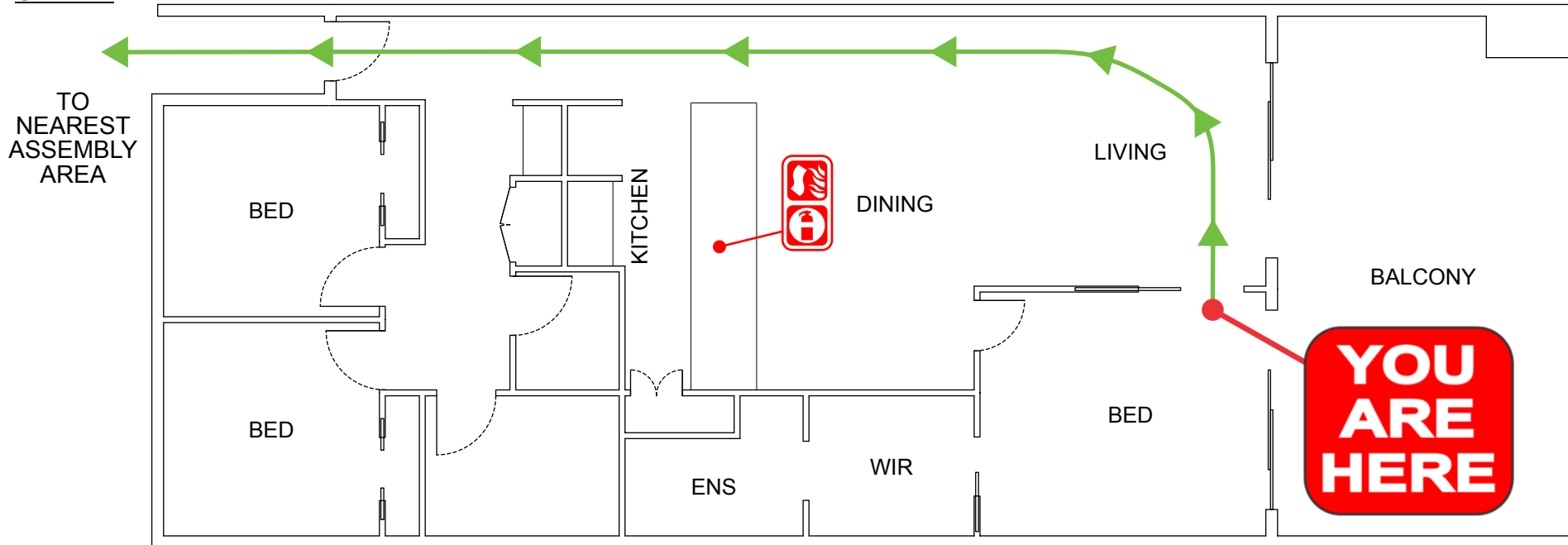


EVACUATION DIAGRAM

24/2-10 KAMALA CR, CASUARINA NSW 2487

UNIT 24



NOT TO SCALE

IN AN EMERGENCY



EMERGENCY EVACUATION PROCEDURE IN CASE OF FIRE OR OTHER EMERGENCY

- If you see SMOKE, FLAMES or hear the SMOKE ALARM, alert other occupants immediately.
- If safe, close any windows and doors to confine the fire.
- Leave to the nearest **EXIT** and proceed to the assembly area.
- TELEPHONE **000** and notify the Emergency Services.
- Do not re-enter the building until you are told it is safe to do so by the Emergency Services.

LEGEND

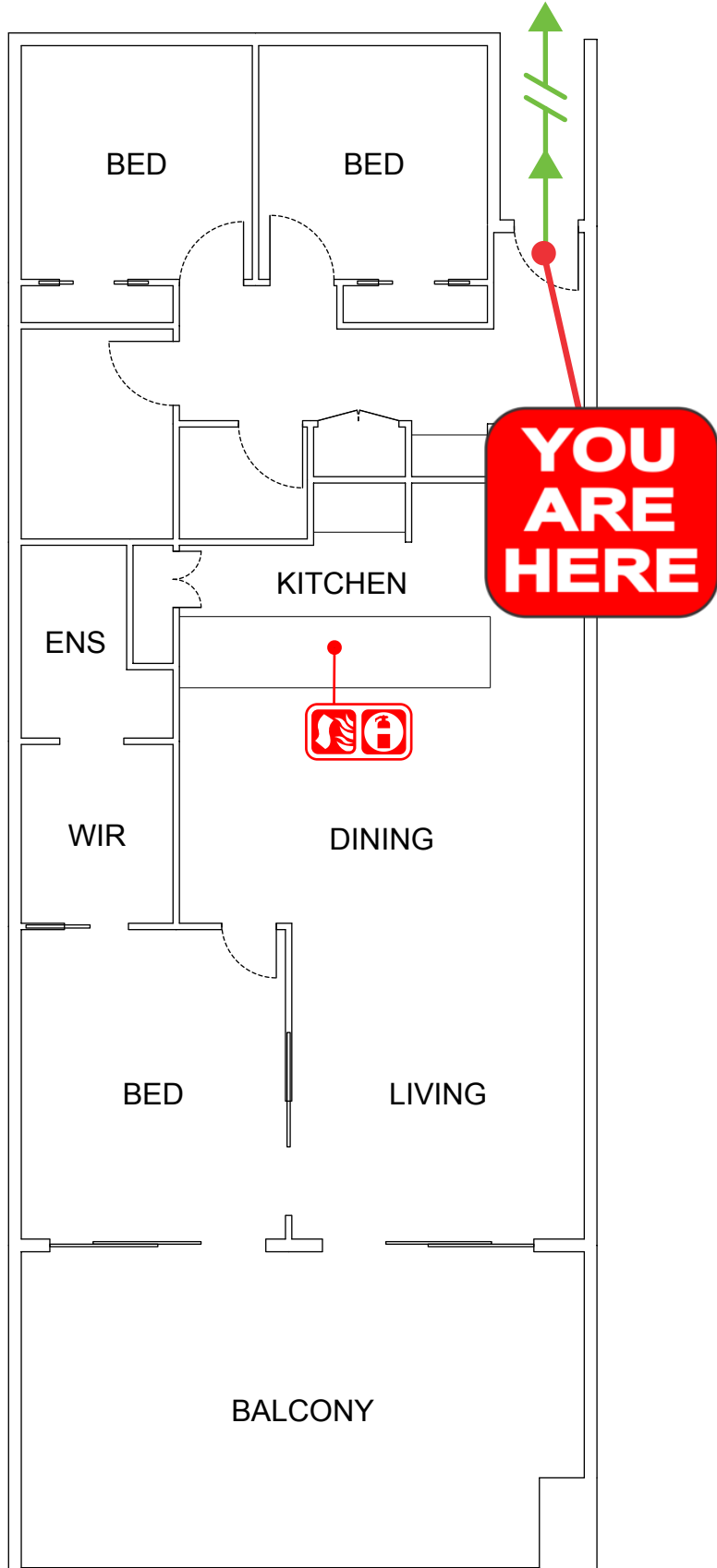


EVACUATION DIAGRAM

24/2-10 KAMALA CR, CASUARINA NSW 2487

UNIT 24

TO NEAREST ASSEMBLY AREA



NOT TO SCALE

IN AN EMERGENCY



emergencyplus

Save the app that
could save your life



triplezero.gov.au

EMERGENCY EVACUATION PROCEDURE IN CASE OF

FIRE OR OTHER EMERGENCY

- If you see SMOKE, FLAMES or hear the SMOKE ALARM, alert other occupants immediately.
- If safe, close any windows and doors to confine the fire.
- Leave to the nearest **EXIT** and proceed to the assembly area.
- TELEPHONE **000** and notify the Emergency Services.
- Do not re-enter the building until you are told it is safe to do so by the Emergency Services.



**AUSTRALIAN
FIRE PROTECTION**

Austfirepro.com.au - 1300 80 FIRE

Preparing People For Emergencies

LEGEND



Dry Chemical
Powder



Fire
Blanket

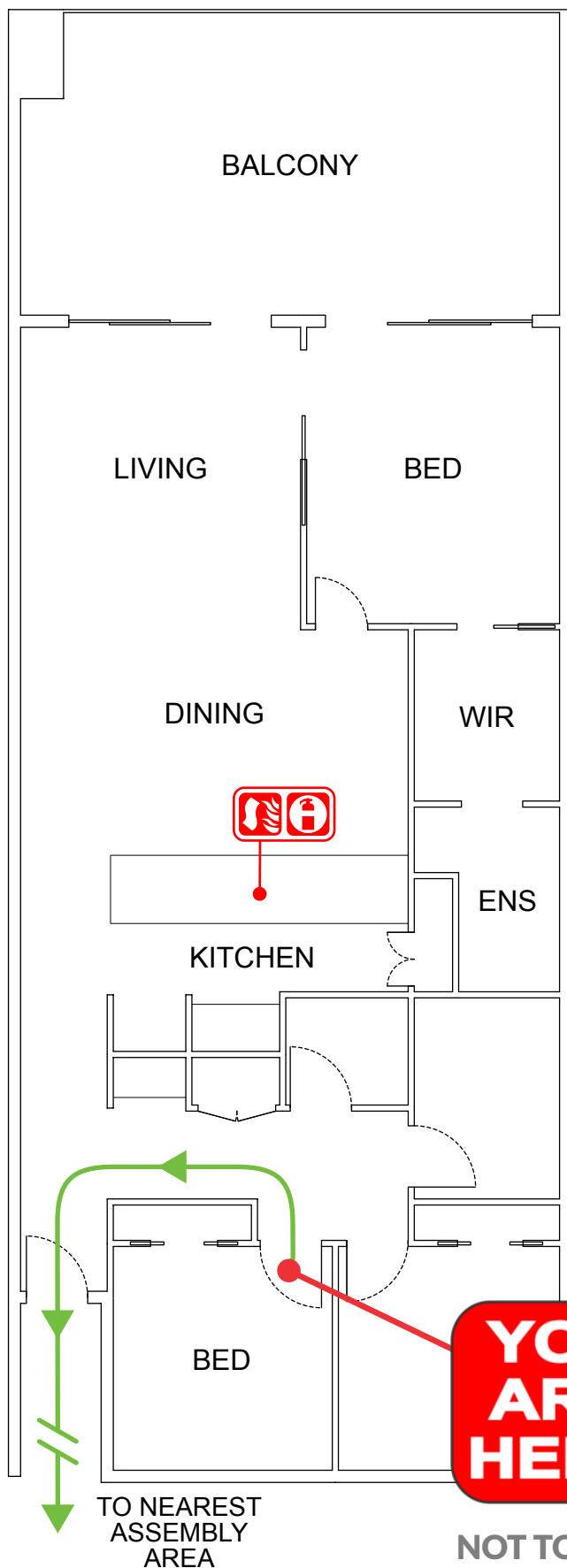


Evacuation
Path

EVACUATION DIAGRAM

24/2-10 KAMALA CR, CASUARINA NSW 2487

UNIT 24



IN AN EMERGENCY



emergencyplus

Save the app that could save your life



triplezero.gov.au

EMERGENCY EVACUATION PROCEDURE IN CASE OF

FIRE OR OTHER EMERGENCY

- If you see SMOKE, FLAMES or hear the SMOKE ALARM, alert other occupants immediately.
- If safe, close any windows and doors to confine the fire.
- Leave to the nearest **EXIT** and proceed to the assembly area.
- TELEPHONE **000** and notify the Emergency Services.
- Do not re-enter the building until you are told it is safe to do so by the Emergency Services.



**AUSTRALIAN
FIRE PROTECTION**

Austfirepro.com.au - 1300 80 FIRE

Preparing People For Emergencies

LEGEND



Dry Chemical Powder



Fire Blanket

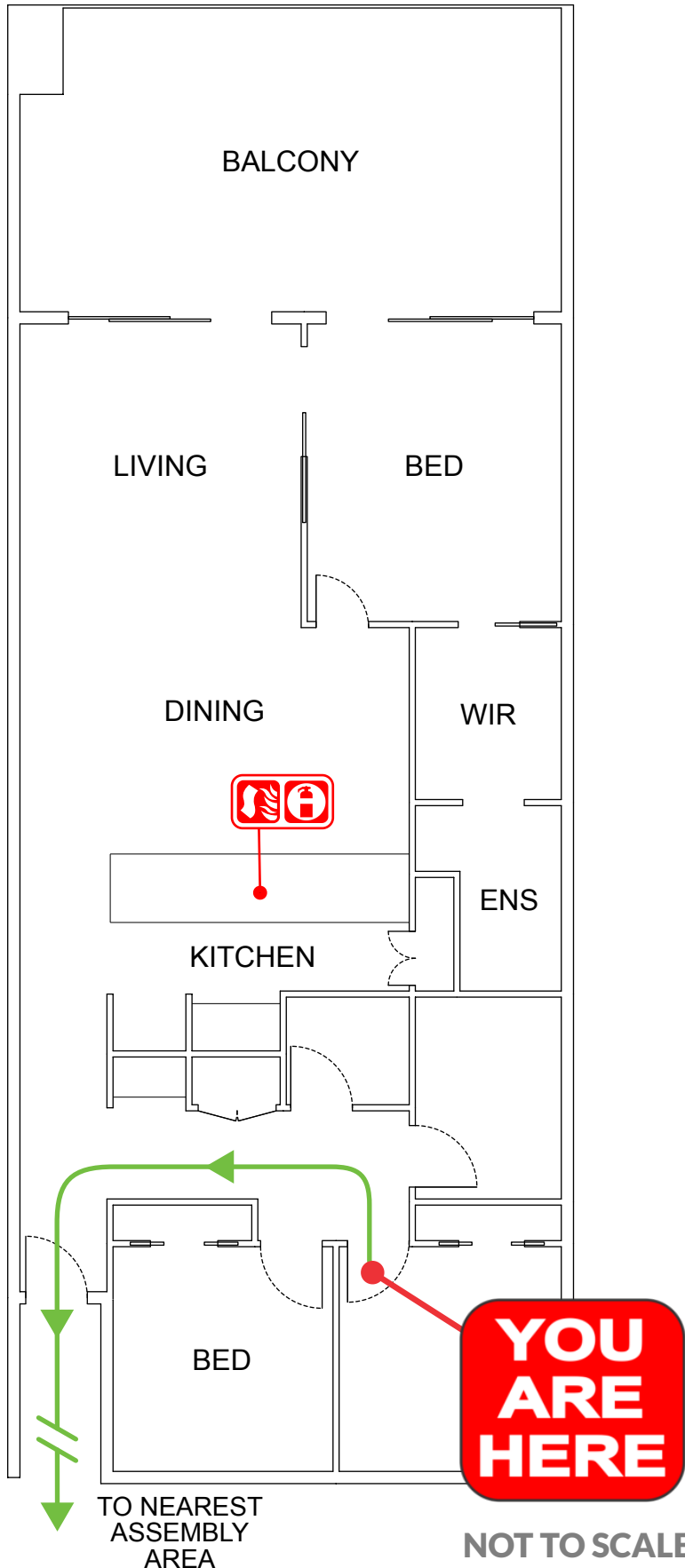


Evacuation Path

EVACUATION DIAGRAM

24/2-10 KAMALA CR, CASUARINA NSW 2487

UNIT 24



IN AN EMERGENCY



emergencyplus

Save the app that could save your life



triplezero.gov.au

EMERGENCY EVACUATION PROCEDURE IN CASE OF

FIRE OR OTHER EMERGENCY

- If you see SMOKE, FLAMES or hear the SMOKE ALARM, alert other occupants immediately.
- If safe, close any windows and doors to confine the fire.
- Leave to the nearest **EXIT** and proceed to the assembly area.
- TELEPHONE **000** and notify the Emergency Services.
- Do not re-enter the building until you are told it is safe to do so by the Emergency Services.



AUSTRALIAN
FIRE PROTECTION

Austfirepro.com.au - 1300 80 FIRE

Preparing People For Emergencies

LEGEND



Dry Chemical Powder



Fire Blanket



Evacuation Path