

EVACUATION DIAGRAM

6/10 TWEED COAST RD, HASTINGS POINT NSW 2489



EMERGENCY EVACUATION PROCEDURE IN CASE OF FIRE OR OTHER EMERGENCY



emergencyplus

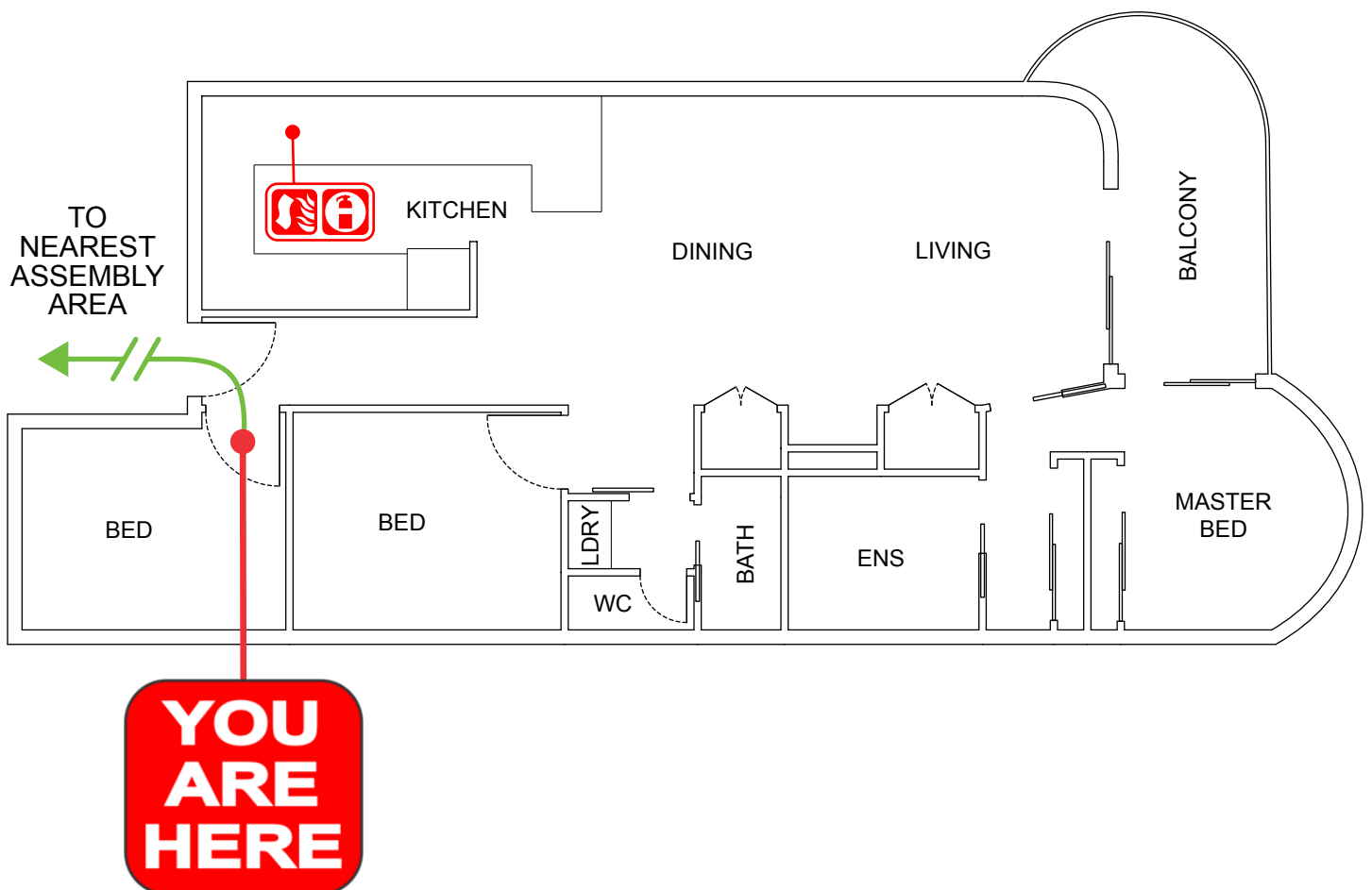
Save the app that
could save your life



triplezero.gov.au

- If you see SMOKE, FLAMES or hear the SMOKE ALARM, alert other occupants immediately.
- If safe, close any windows and doors to confine the fire.
- Leave to the nearest **EXIT** and proceed to the assembly area.
- TELEPHONE **000** and notify the Emergency Services.
- Do not re-enter the building until you are told it is safe to do so by the Emergency Services.

UNIT 6



LEGEND



**AUSTRALIAN
FIRE PROTECTION**

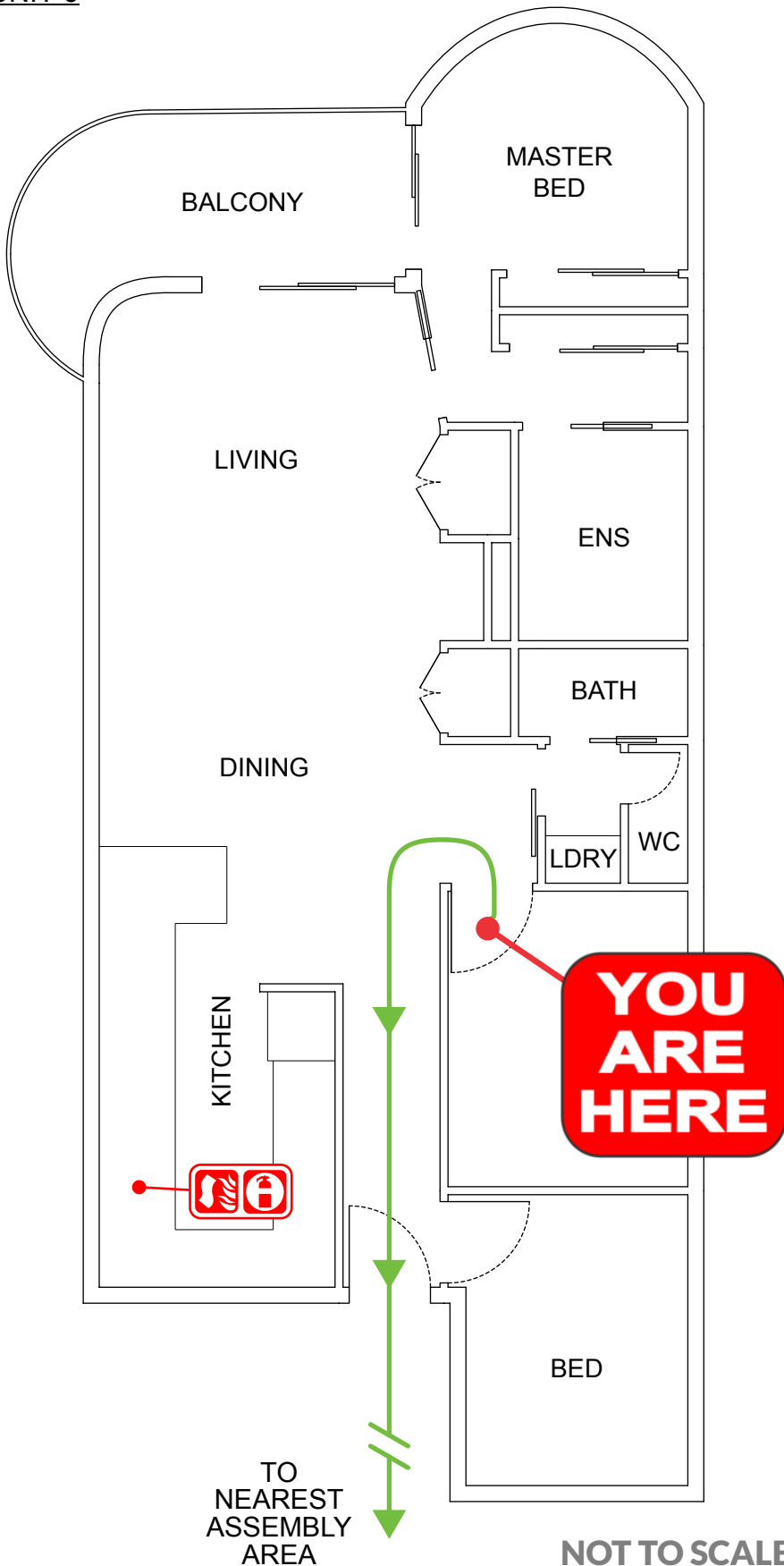
Austfirepro.com.au - 1300 80 FIRE

Preparing People For Emergencies

EVACUATION DIAGRAM

6/10 TWEED COAST RD, HASTINGS POINT NSW 2489

UNIT 6



IN AN EMERGENCY



emergencyplus

Save the app that
could save your life



triplezero.gov.au

EMERGENCY EVACUATION
PROCEDURE IN CASE OF

FIRE OR OTHER EMERGENCY

- If you see SMOKE, FLAMES or hear the SMOKE ALARM, alert other occupants immediately.
- If safe, close any windows and doors to confine the fire.
- Leave to the nearest **EXIT** and proceed to the assembly area.
- TELEPHONE **000** and notify the Emergency Services.
- Do not re-enter the building until you are told it is safe to do so by the Emergency Services.



**AUSTRALIAN
FIRE PROTECTION**

Austfirepro.com.au - 1300 80 FIRE

Preparing People For Emergencies

LEGEND



Dry Chemical
Powder



Fire
Blanket



Evacuation
Path

EVACUATION DIAGRAM

6/10 TWEED COAST RD, HASTINGS POINT NSW 2489



EMERGENCY EVACUATION PROCEDURE IN CASE OF FIRE OR OTHER EMERGENCY



emergencyplus

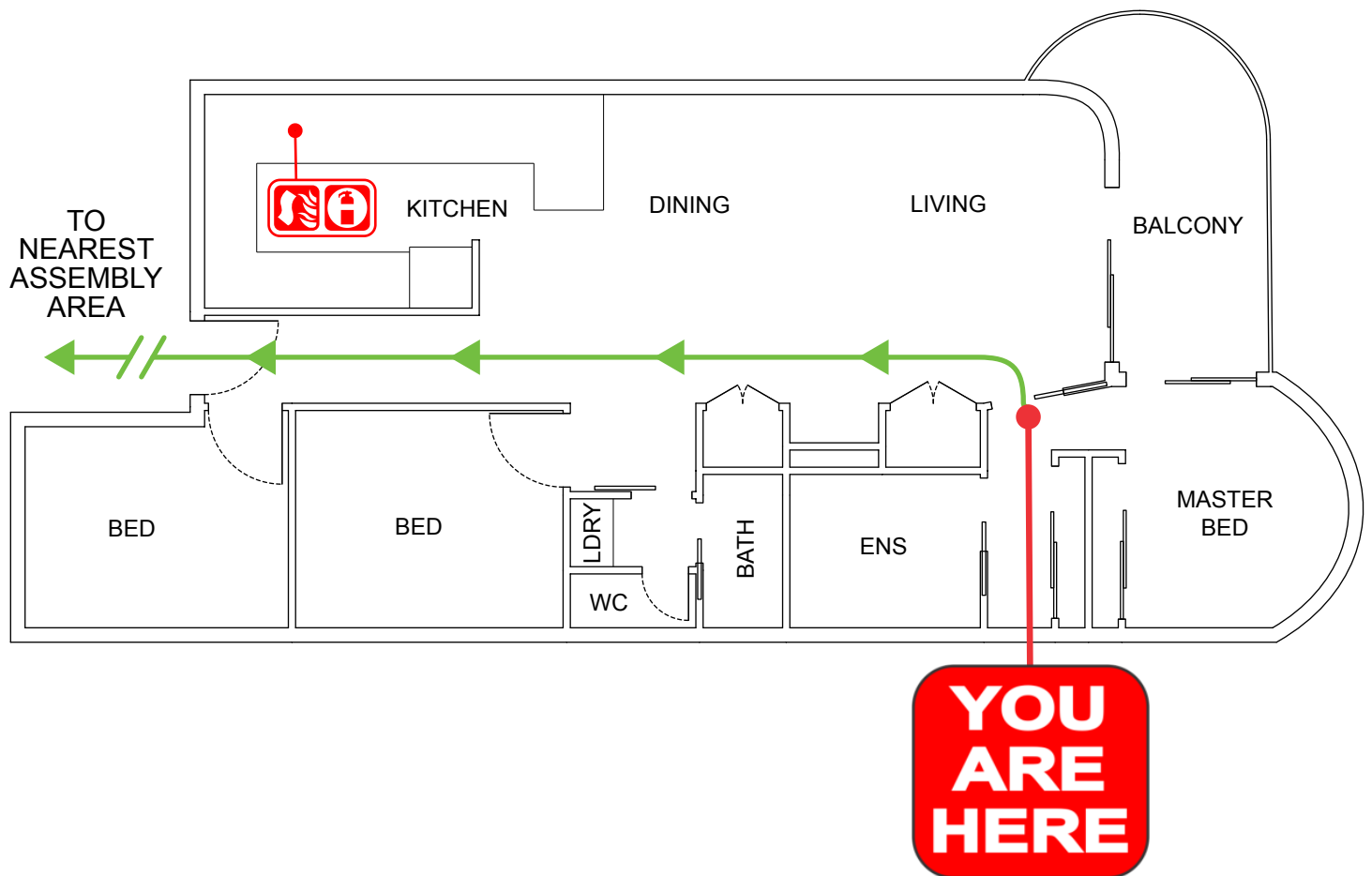
Save the app that
could save your life



triplezero.gov.au

- If you see SMOKE, FLAMES or hear the SMOKE ALARM, alert other occupants immediately.
- If safe, close any windows and doors to confine the fire.
- Leave to the nearest **EXIT** and proceed to the assembly area.
- TELEPHONE **000** and notify the Emergency Services.
- Do not re-enter the building until you are told it is safe to do so by the Emergency Services.

UNIT 6



LEGEND



Dry Chemical
Powder



Fire
Blanket



Evacuation
Path



**AUSTRALIAN
FIRE PROTECTION**

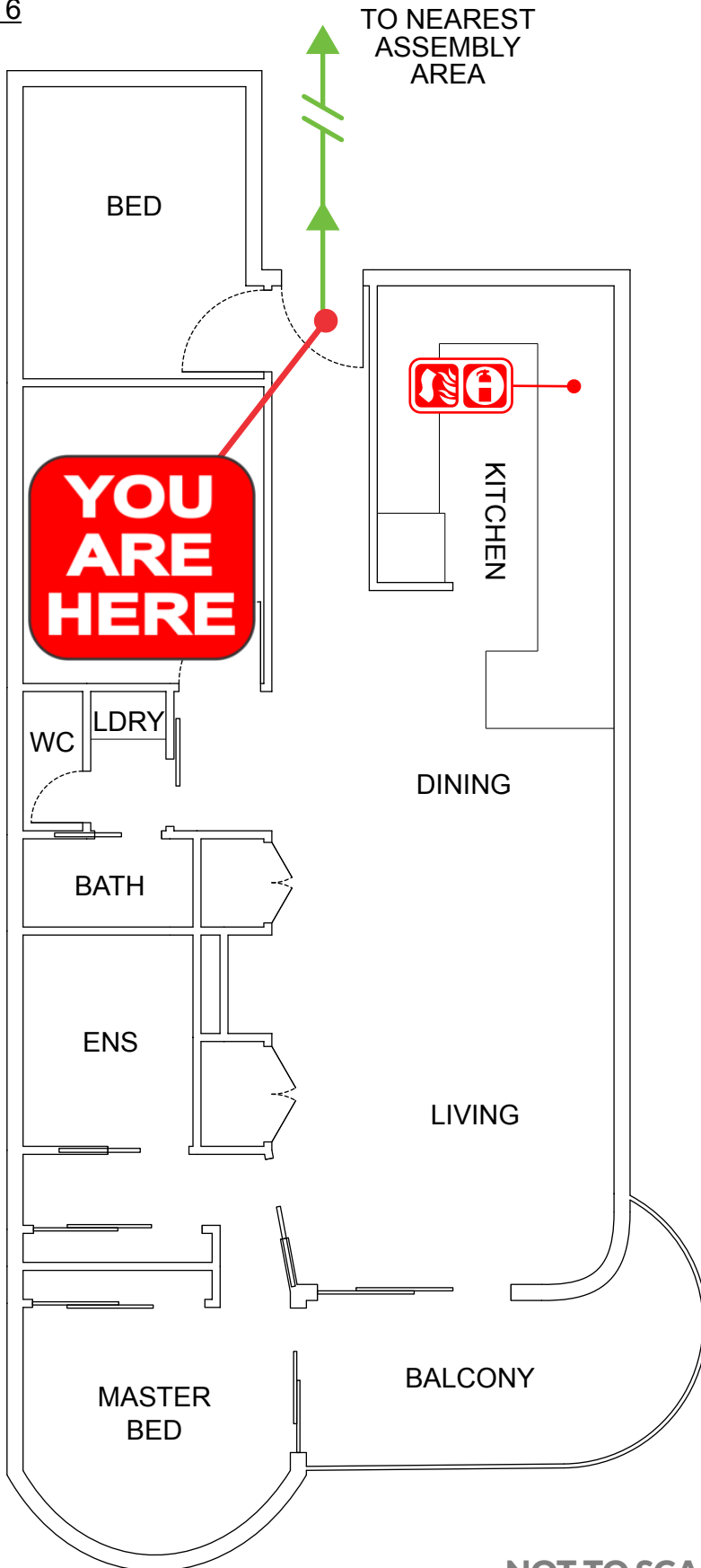
Austfirepro.com.au - 1300 80 FIRE

Preparing People For Emergencies

EVACUATION DIAGRAM

6/10 TWEED COAST RD, HASTINGS POINT NSW 2489

UNIT 6



NOT TO SCALE

IN AN EMERGENCY



emergencyplus

Save the app that could save your life



triplezero.gov.au

EMERGENCY EVACUATION PROCEDURE IN CASE OF

FIRE OR OTHER EMERGENCY

- If you see SMOKE, FLAMES or hear the SMOKE ALARM, alert other occupants immediately.
- If safe, close any windows and doors to confine the fire.
- Leave to the nearest **EXIT** and proceed to the assembly area.
- TELEPHONE **000** and notify the Emergency Services.
- Do not re-enter the building until you are told it is safe to do so by the Emergency Services.



**AUSTRALIAN
FIRE PROTECTION**

Austfirepro.com.au - 1300 80 FIRE

Preparing People For Emergencies

LEGEND



Dry Chemical Powder



Fire Blanket



Evacuation Path