

# EVACUATION DIAGRAM

UNIT 50/685 CASUARINA WAY, CASUARINA NSW 2487



## EMERGENCY EVACUATION PROCEDURE IN CASE OF FIRE OR OTHER EMERGENCY



emergencyplus

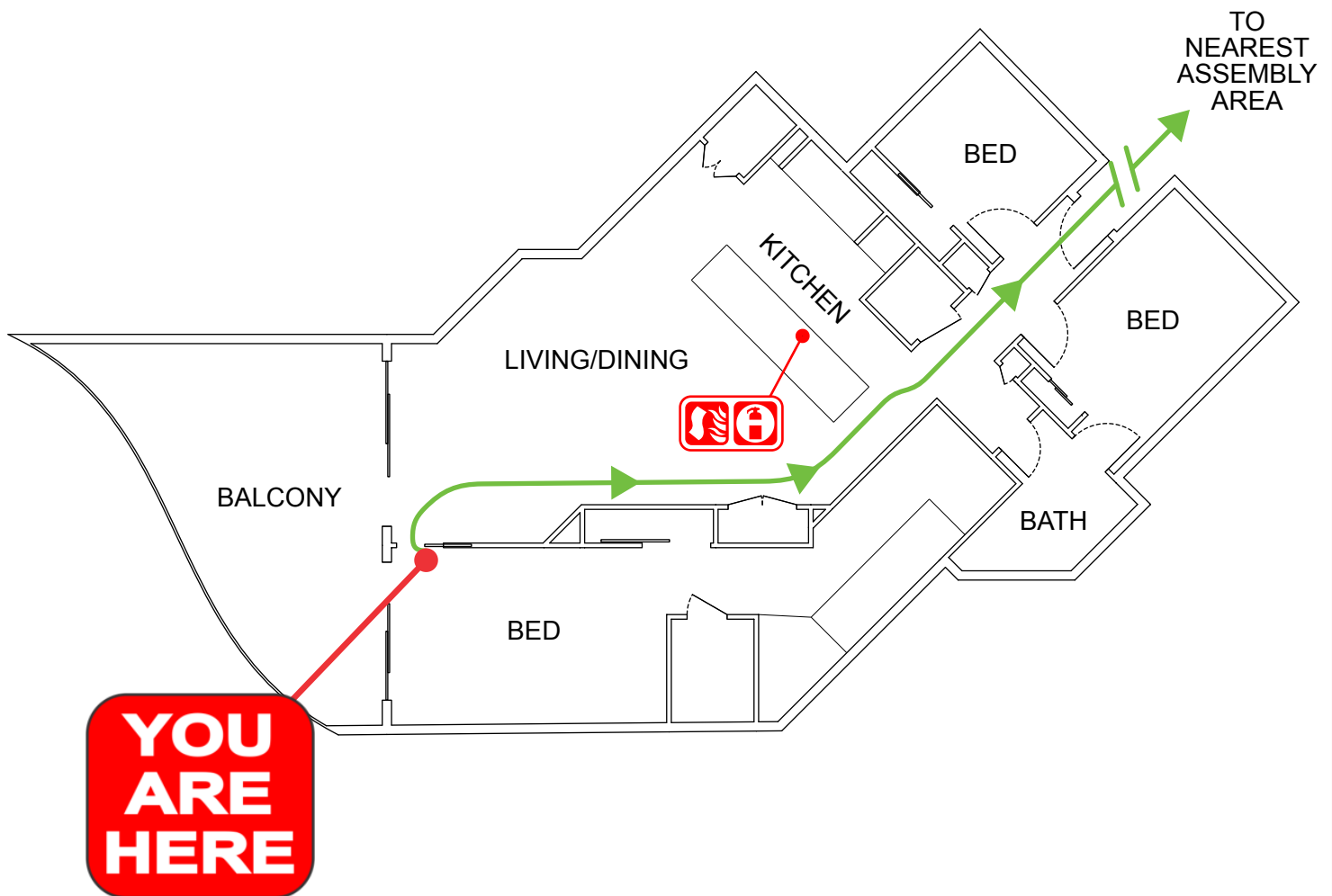
Save the app that  
could save your life



triplezero.gov.au

- If you see SMOKE, FLAMES or hear the SMOKE ALARM, alert other occupants immediately.
- If safe, close any windows and doors to confine the fire.
- Leave to the nearest **EXIT** and proceed to the assembly area.
- TELEPHONE **000** and notify the Emergency Services.
- Do not re-enter the building until you are told it is safe to do so by the Emergency Services.

### UNIT 50



#### LEGEND



Dry Chemical  
Powder



Fire  
Blanket



Evacuation  
Path



**AUSTRALIAN  
FIRE PROTECTION**

Austfirepro.com.au - 1300 80 FIRE

Preparing People For Emergencies

# EVACUATION DIAGRAM

UNIT 50/685 CASUARINA WAY, CASUARINA NSW 2487



## EMERGENCY EVACUATION PROCEDURE IN CASE OF FIRE OR OTHER EMERGENCY



emergencyplus

Save the app that  
could save your life



triplezero.gov.au

- If you see SMOKE, FLAMES or hear the SMOKE ALARM, alert other occupants immediately.
- If safe, close any windows and doors to confine the fire.
- Leave to the nearest **EXIT** and proceed to the assembly area.
- TELEPHONE **000** and notify the Emergency Services.
- Do not re-enter the building until you are told it is safe to do so by the Emergency Services.

### UNIT 50



### LEGEND



**AUSTRALIAN  
FIRE PROTECTION**

Austfirepro.com.au - 1300 80 FIRE

*Preparing People For Emergencies*

# EVACUATION DIAGRAM

UNIT 50/685 CASUARINA WAY, CASUARINA NSW 2487



## EMERGENCY EVACUATION PROCEDURE IN CASE OF FIRE OR OTHER EMERGENCY



emergencyplus

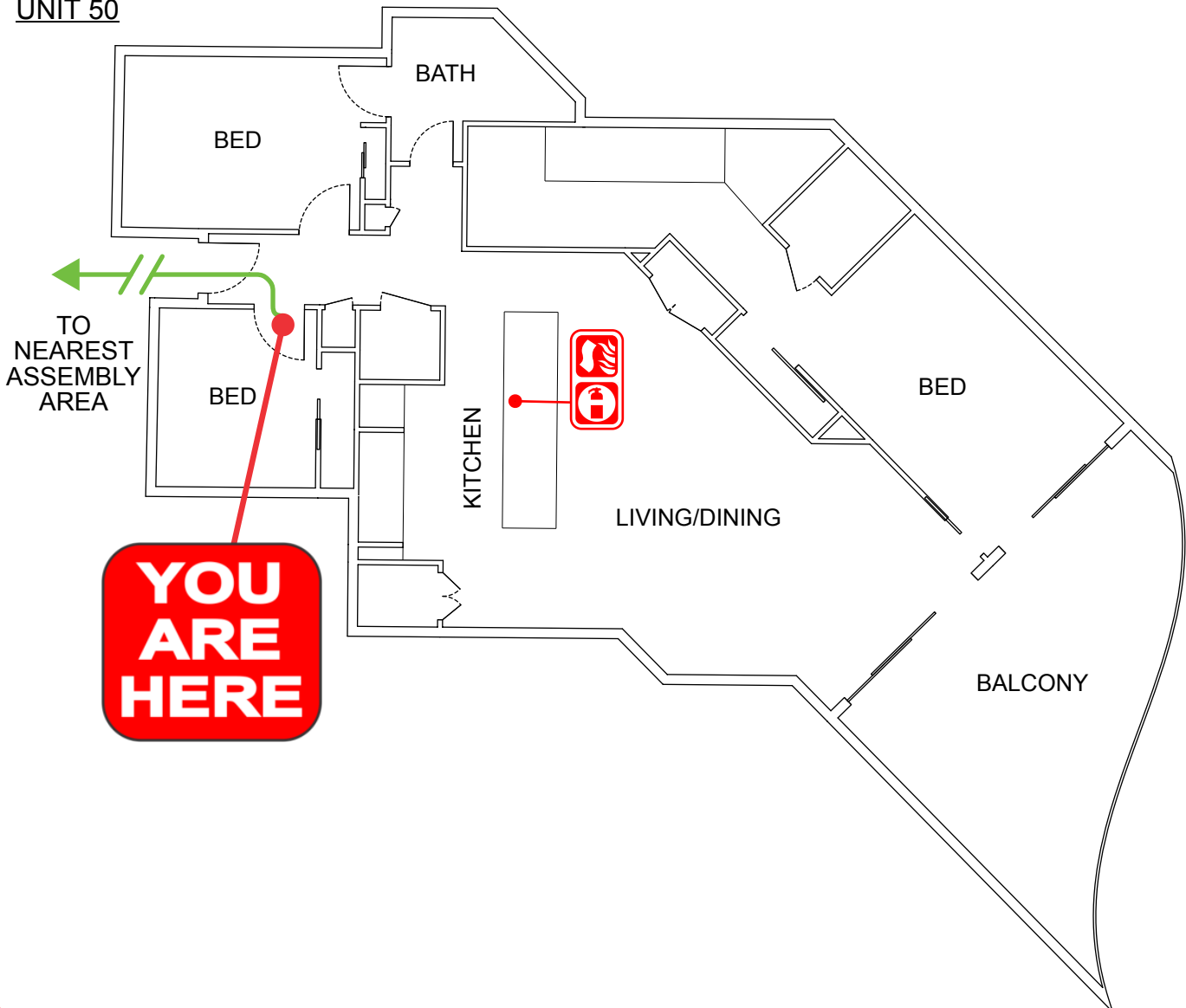
Save the app that  
could save your life



triplezero.gov.au

- If you see SMOKE, FLAMES or hear the SMOKE ALARM, alert other occupants immediately.
- If safe, close any windows and doors to confine the fire.
- Leave to the nearest **EXIT** and proceed to the assembly area.
- TELEPHONE **000** and notify the Emergency Services.
- Do not re-enter the building until you are told it is safe to do so by the Emergency Services.

### UNIT 50



### LEGEND



Dry Chemical  
Powder



Fire  
Blanket



Evacuation  
Path



**AUSTRALIAN  
FIRE PROTECTION**

Austfirepro.com.au - 1300 80 FIRE

Preparing People For Emergencies

# EVACUATION DIAGRAM

UNIT 50/685 CASUARINA WAY, CASUARINA NSW 2487



## EMERGENCY EVACUATION PROCEDURE IN CASE OF FIRE OR OTHER EMERGENCY



emergencyplus

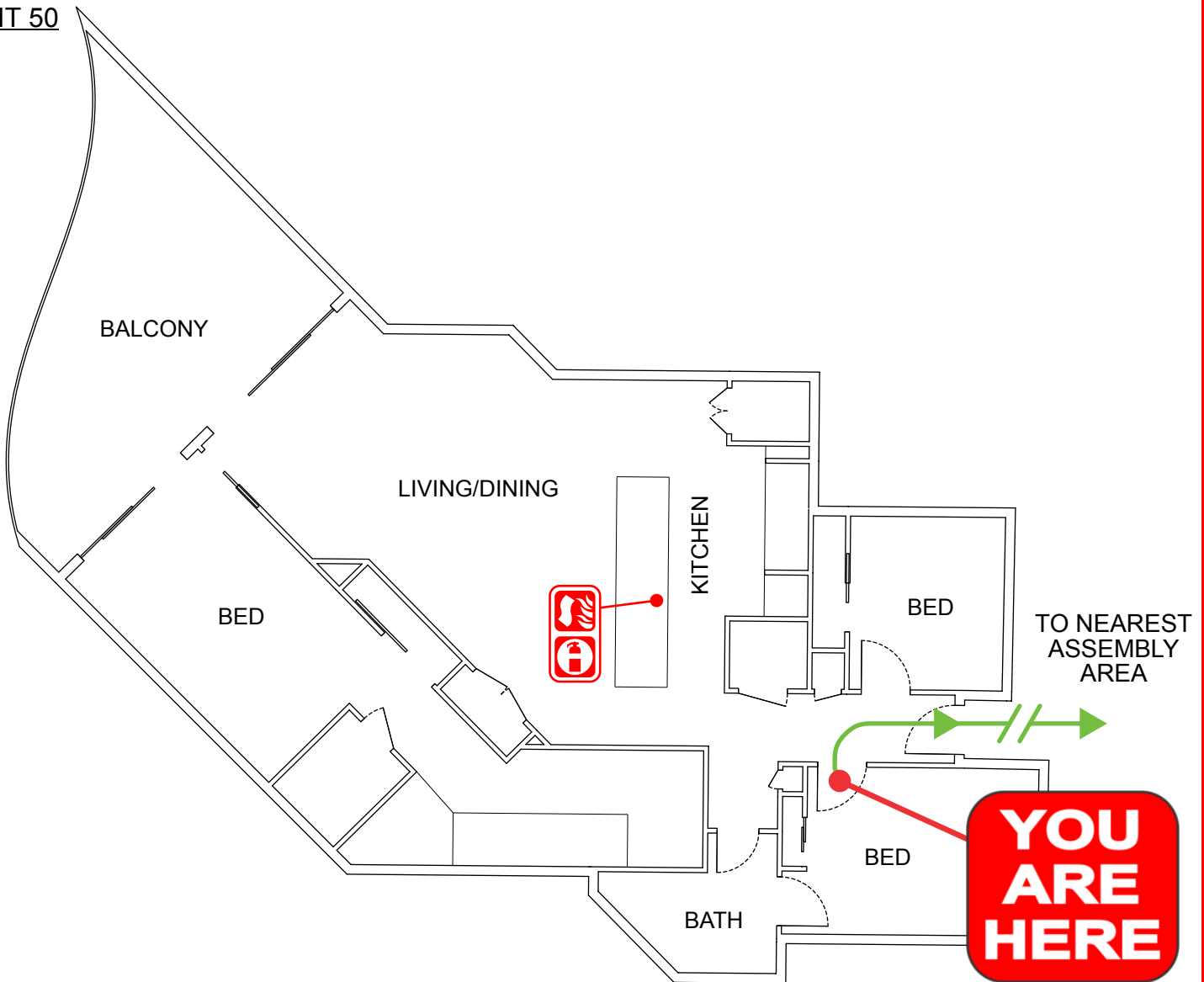
Save the app that  
could save your life



triplezero.gov.au

- If you see SMOKE, FLAMES or hear the SMOKE ALARM, alert other occupants immediately.
- If safe, close any windows and doors to confine the fire.
- Leave to the nearest **EXIT** and proceed to the assembly area.
- TELEPHONE **000** and notify the Emergency Services.
- Do not re-enter the building until you are told it is safe to do so by the Emergency Services.

UNIT 50



### LEGEND



Dry Chemical  
Powder



Fire  
Blanket



Evacuation  
Path



**AUSTRALIAN  
FIRE PROTECTION**

Austfirepro.com.au - 1300 80 FIRE

Preparing People For Emergencies