

EVACUATION DIAGRAM

45 ANDREW AVENUE, POTTSVILLE NSW 2489



EMERGENCY EVACUATION PROCEDURE IN CASE OF FIRE OR OTHER EMERGENCY



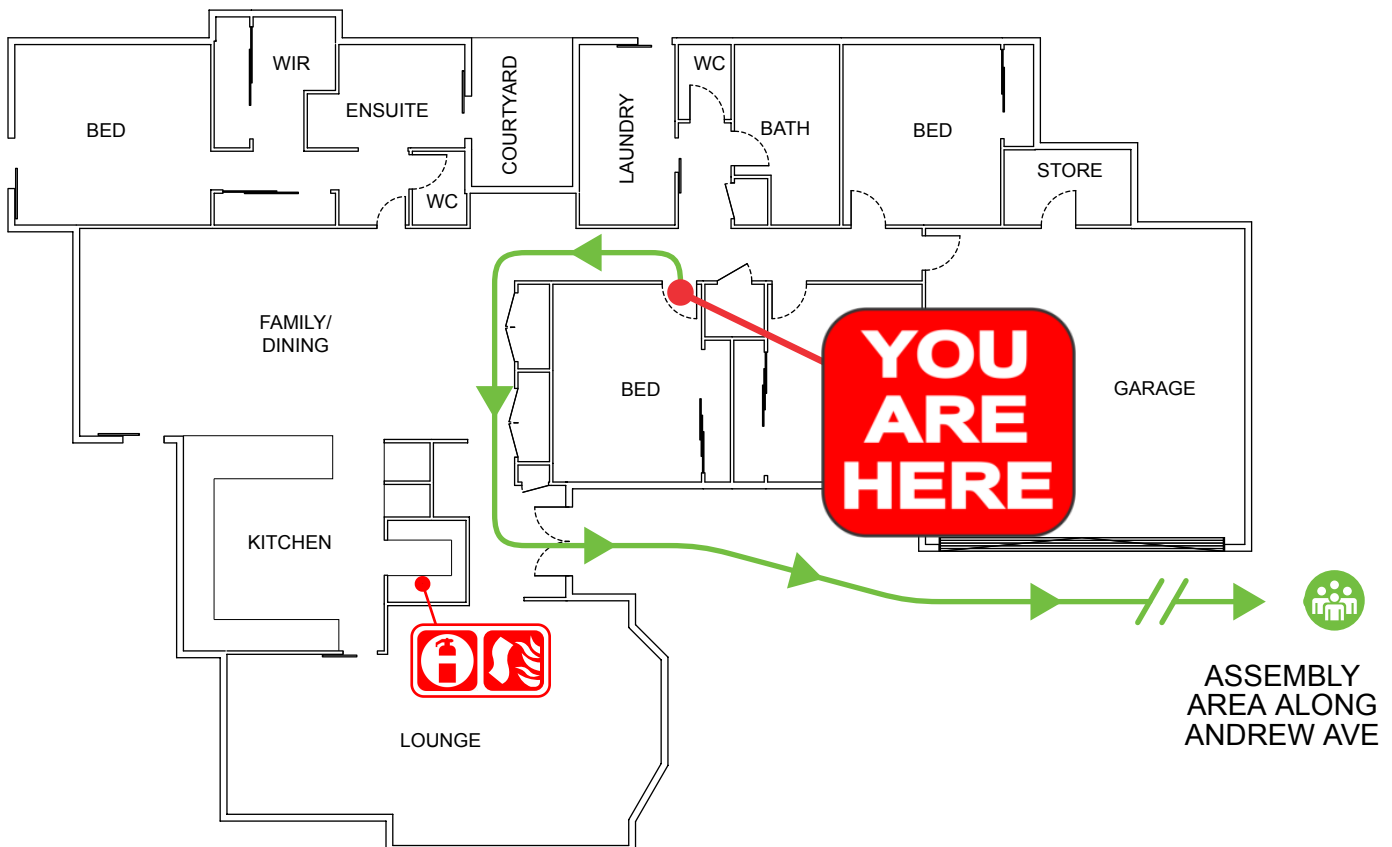
emergencyplus

Save the app that
could save your life



triplezero.gov.au

- If you see SMOKE, FLAMES or hear the SMOKE ALARM, alert other occupants immediately.
- If safe, close any windows and doors to confine the fire.
- Leave to the nearest **EXIT** and proceed to the assembly area.
- TELEPHONE **000** and notify the Emergency Services.
- Do not re-enter the building until you are told it is safe to do so by the Emergency Services.



LEGEND



Assembly
Area



Dry Chemical
Powder



Fire
Blanket



Evacuation
Path



AUSTRALIAN
FIRE PROTECTION

Austfirepro.com.au - 1300 80 FIRE

Preparing People For Emergencies

EVACUATION DIAGRAM

45 ANDREW AVENUE, POTTSVILLE NSW 2489



EMERGENCY EVACUATION PROCEDURE IN CASE OF FIRE OR OTHER EMERGENCY



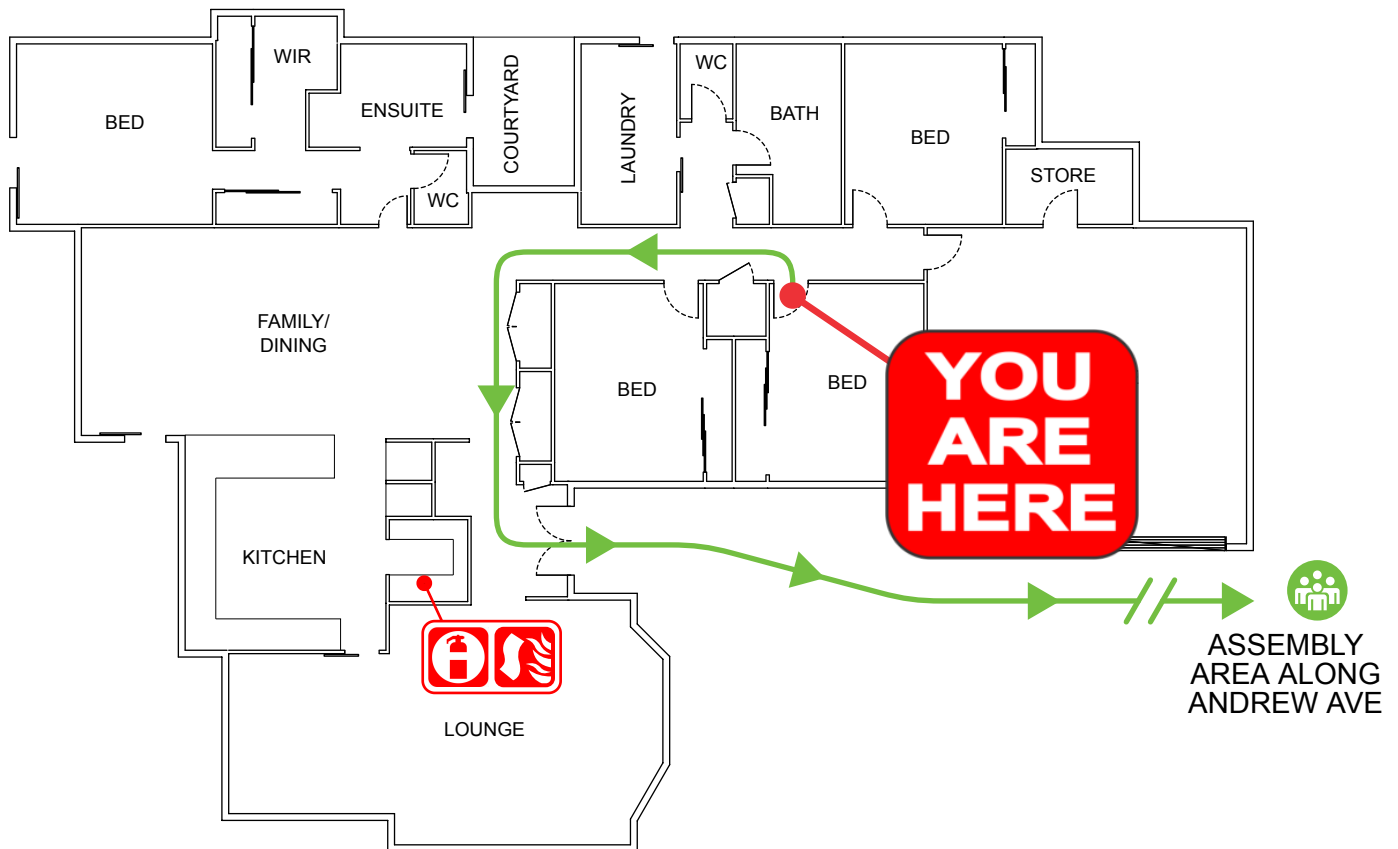
emergencyplus

Save the app that
could save your life



triplezero.gov.au

- If you see SMOKE, FLAMES or hear the SMOKE ALARM, alert other occupants immediately.
- If safe, close any windows and doors to confine the fire.
- Leave to the nearest **EXIT** and proceed to the assembly area.
- TELEPHONE **000** and notify the Emergency Services.
- Do not re-enter the building until you are told it is safe to do so by the Emergency Services.



LEGEND



Assembly Area



Dry Chemical Powder



Fire Blanket



Evacuation Path



AUSTRALIAN
FIRE PROTECTION

Austfirepro.com.au - 1300 80 FIRE

Preparing People For Emergencies

EVACUATION DIAGRAM

45 ANDREW AVENUE, POTTSVILLE NSW 2489



EMERGENCY EVACUATION PROCEDURE IN CASE OF FIRE OR OTHER EMERGENCY



emergencyplus

Save the app that
could save your life



triplezero.gov.au

- If you see SMOKE, FLAMES or hear the SMOKE ALARM, alert other occupants immediately.
- If safe, close any windows and doors to confine the fire.
- Leave to the nearest **EXIT** and proceed to the assembly area.
- TELEPHONE **000** and notify the Emergency Services.
- Do not re-enter the building until you are told it is safe to do so by the Emergency Services.



LEGEND



Assembly
Area



Dry Chemical
Powder



Fire
Blanket



Evacuation
Path



**AUSTRALIAN
FIRE PROTECTION**

Austfirepro.com.au - 1300 80 FIRE

Preparing People For Emergencies

EVACUATION DIAGRAM

45 ANDREW AVENUE, POTTSVILLE NSW 2489



EMERGENCY EVACUATION PROCEDURE IN CASE OF FIRE OR OTHER EMERGENCY



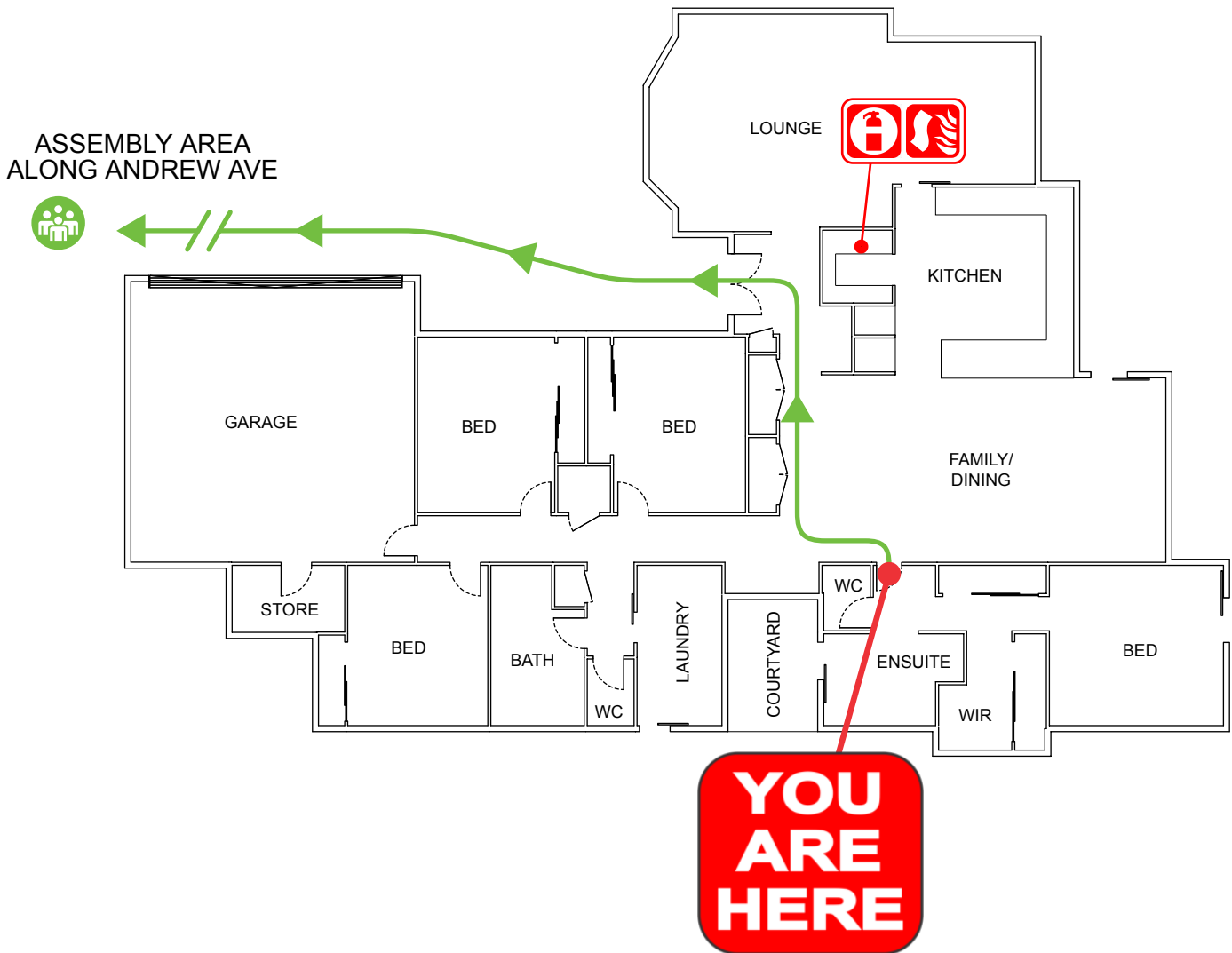
emergencyplus

Save the app that
could save your life



triplezero.gov.au

- If you see SMOKE, FLAMES or hear the SMOKE ALARM, alert other occupants immediately.
- If safe, close any windows and doors to confine the fire.
- Leave to the nearest **EXIT** and proceed to the assembly area.
- TELEPHONE **000** and notify the Emergency Services.
- Do not re-enter the building until you are told it is safe to do so by the Emergency Services.



LEGEND



Assembly
Area



Dry Chemical
Powder



Fire
Blanket



Evacuation
Path



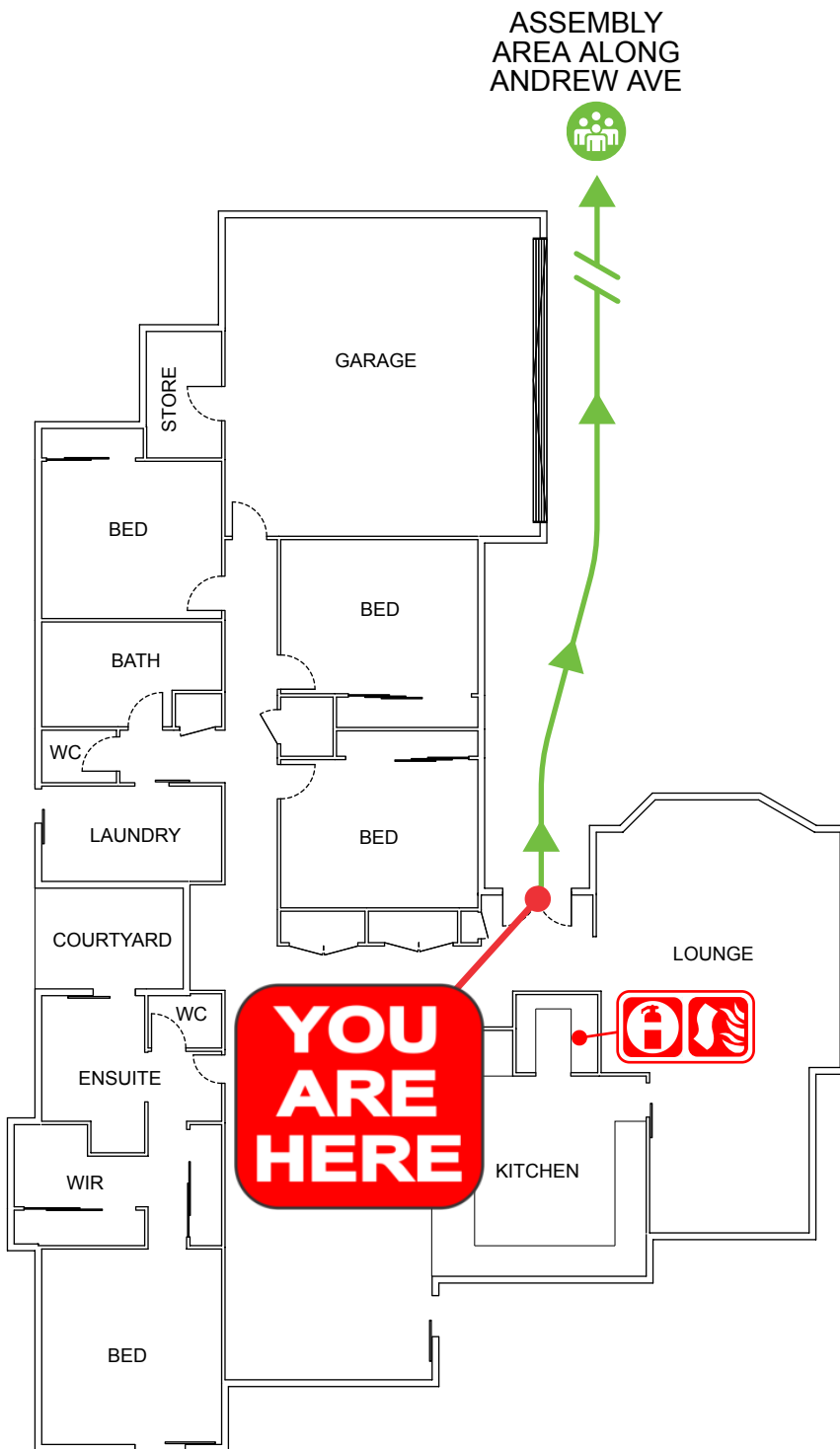
**AUSTRALIAN
FIRE PROTECTION**

Austfirepro.com.au - 1300 80 FIRE

Preparing People For Emergencies

EVACUATION DIAGRAM

45 ANDREW AVENUE, POTTSVILLE NSW 2489



IN AN EMERGENCY



emergencyplus

Save the app that could save your life



triplezero.gov.au

EMERGENCY EVACUATION PROCEDURE IN CASE OF

FIRE OR OTHER EMERGENCY

- If you see SMOKE, FLAMES or hear the SMOKE ALARM, alert other occupants immediately.
- If safe, close any windows and doors to confine the fire.
- Leave to the nearest **EXIT** and proceed to the assembly area.
- TELEPHONE **000** and notify the Emergency Services.
- Do not re-enter the building until you are told it is safe to do so by the Emergency Services.

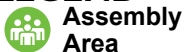


AUSTRALIAN FIRE PROTECTION

Austfirepro.com.au - 1300 80 FIRE

Preparing People For Emergencies

LEGEND



Assembly Area



Dry Chemical Powder



Fire Blanket



Evacuation Path