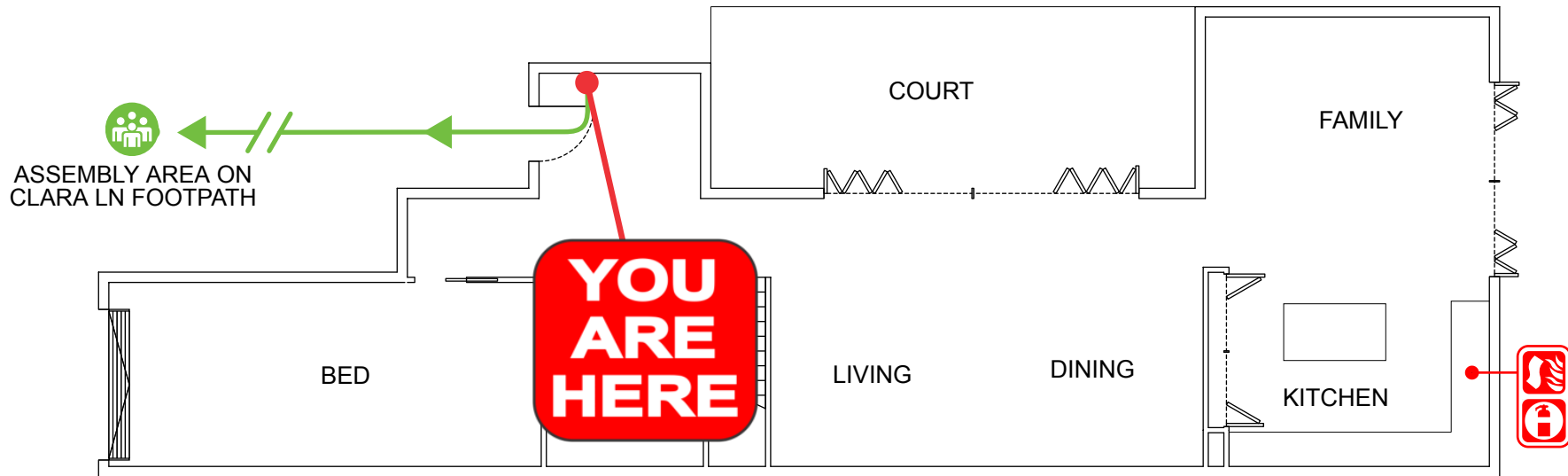


# EVACUATION DIAGRAM

1/5 CLARA LANE, CASUARINA NSW 2487

## GROUND FLOOR



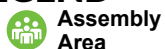
## IN AN EMERGENCY



## EMERGENCY EVACUATION PROCEDURE IN CASE OF FIRE OR OTHER EMERGENCY

- If you see SMOKE, FLAMES or hear the SMOKE ALARM, alert other occupants immediately.
- If safe, close any windows and doors to confine the fire.
- Leave to the nearest **EXIT** and proceed to the assembly area.
- TELEPHONE **000** and notify the Emergency Services.
- Do not re-enter the building until you are told it is safe to do so by the Emergency Services.

## LEGEND



Assembly Area



Dry Chemical Powder



Fire Blanket



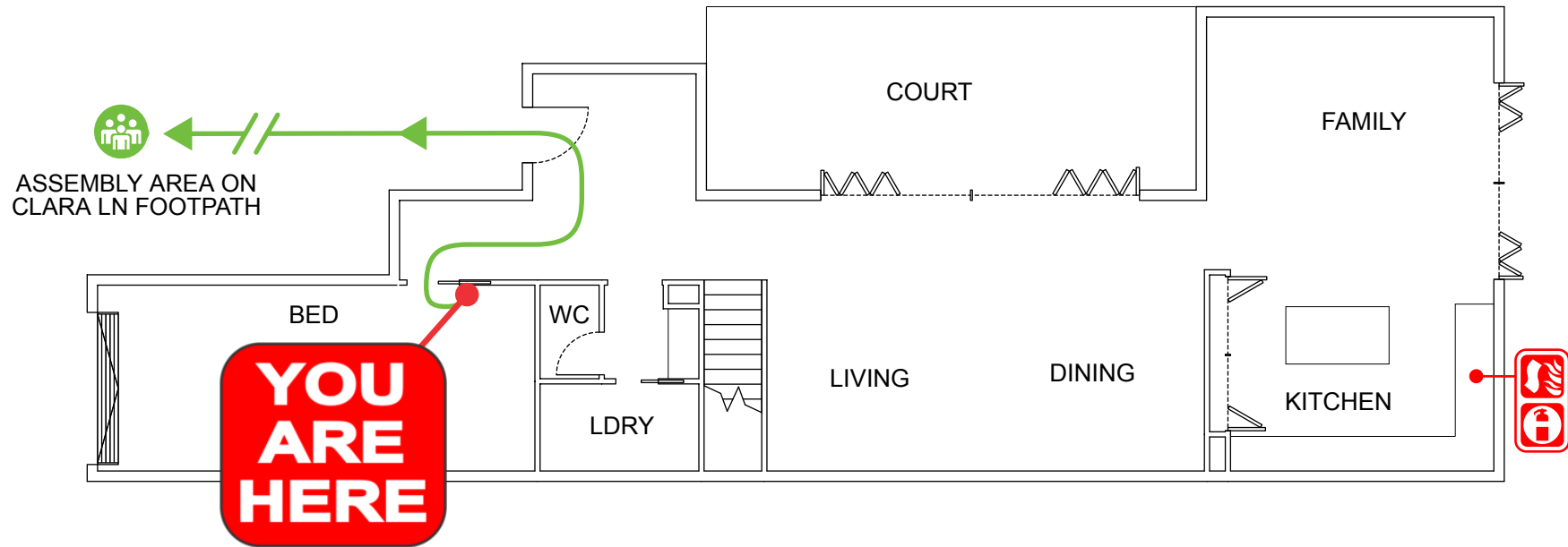
Evacuation Path



# EVACUATION DIAGRAM

1/5 CLARA LANE, CASUARINA NSW 2487

## GROUND FLOOR



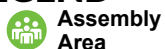
## IN AN EMERGENCY



## EMERGENCY EVACUATION PROCEDURE IN CASE OF FIRE OR OTHER EMERGENCY

- If you see SMOKE, FLAMES or hear the SMOKE ALARM, alert other occupants immediately.
- If safe, close any windows and doors to confine the fire.
- Leave to the nearest **EXIT** and proceed to the assembly area.
- TELEPHONE **000** and notify the Emergency Services.
- Do not re-enter the building until you are told it is safe to do so by the Emergency Services.

## LEGEND



Assembly Area



Dry Chemical Powder



Fire Blanket



Evacuation Path



**AUSTRALIAN  
FIRE PROTECTION**

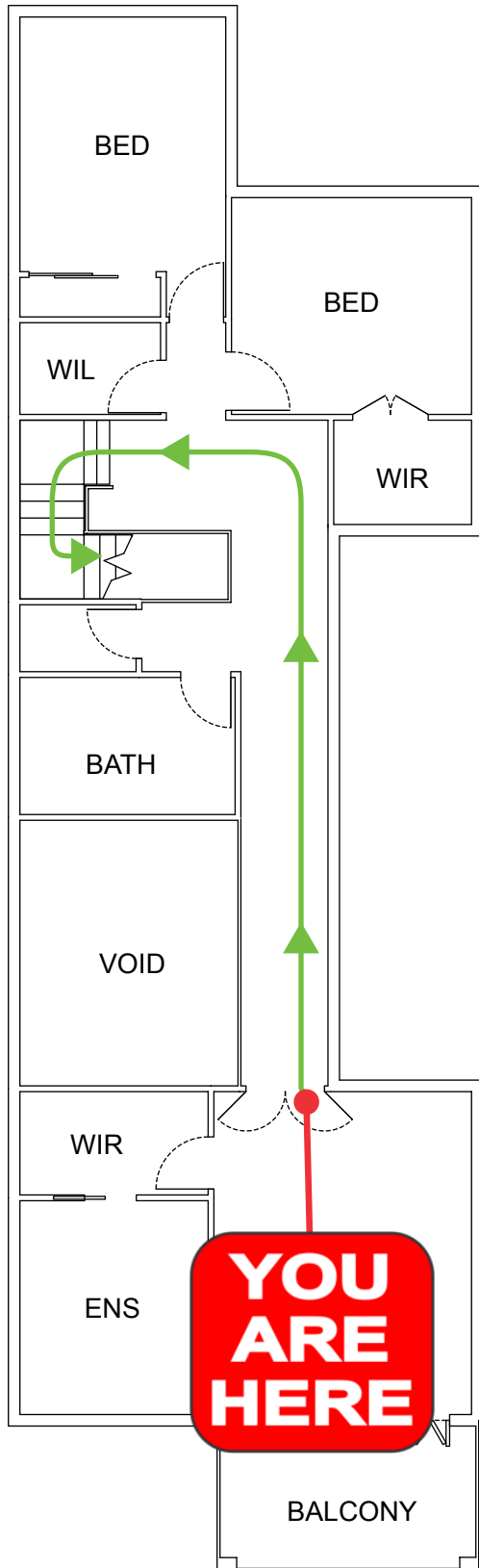
PREPARING PEOPLE FOR EMERGENCIES  
Austfirepro.com.au Ph: 1300 80 FIRE

PreparingPeopleForEmergencies.com.au

# EVACUATION DIAGRAM

1/5 CLARA LANE, CASUARINA NSW 2487

## FIRST FLOOR



## IN AN EMERGENCY



emergencyplus

Save the app that  
could save your life



triplezero.gov.au

## EMERGENCY EVACUATION PROCEDURE IN CASE OF

### FIRE OR OTHER EMERGENCY

- If you see SMOKE, FLAMES or hear the SMOKE ALARM, alert other occupants immediately.
- If safe, close any windows and doors to confine the fire.
- Leave to the nearest **EXIT** and proceed to the assembly area.
- TELEPHONE **000** and notify the Emergency Services.
- Do not re-enter the building until you are told it is safe to do so by the Emergency Services.



**AUSTRALIAN  
FIRE PROTECTION**

Austfirepro.com.au - 1300 80 FIRE

Preparing People For Emergencies

## LEGEND

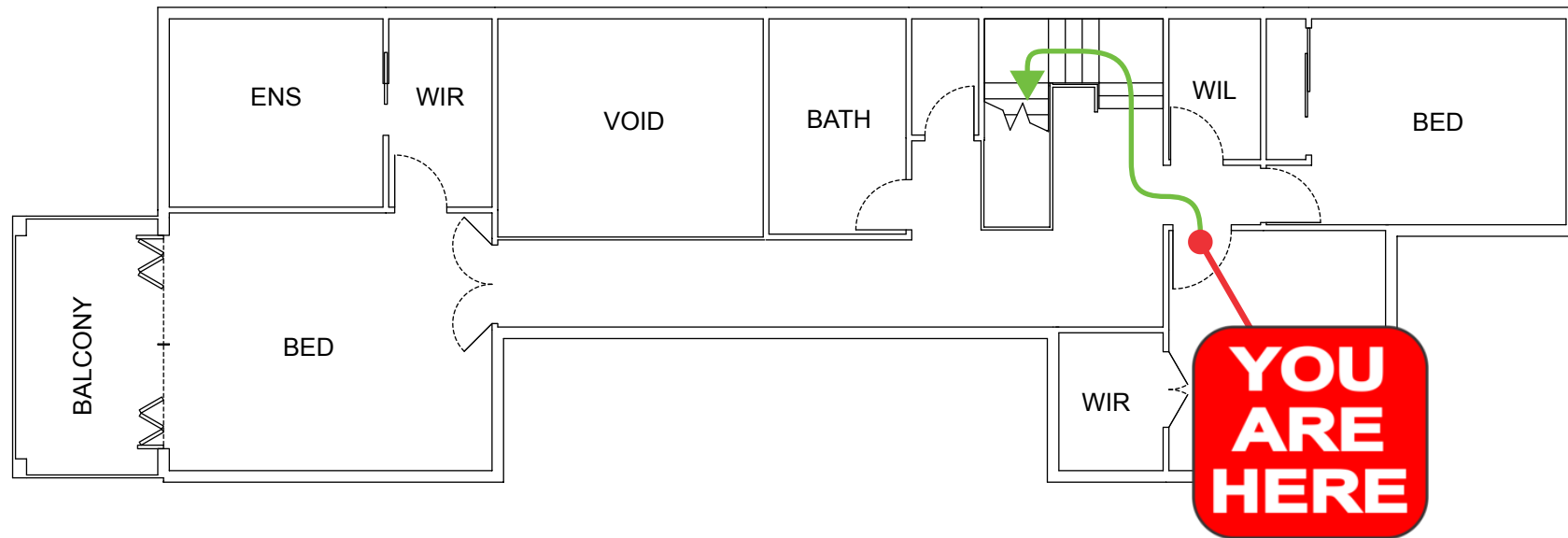


Evacuation  
Path

# EVACUATION DIAGRAM

1/5 CLARA LANE, CASUARINA NSW 2487

FIRST FLOOR



## IN AN EMERGENCY



## EMERGENCY EVACUATION PROCEDURE IN CASE OF FIRE OR OTHER EMERGENCY

- If you see SMOKE, FLAMES or hear the SMOKE ALARM, alert other occupants immediately.
- If safe, close any windows and doors to confine the fire.
- Leave to the nearest **EXIT** and proceed to the assembly area.
- TELEPHONE **000** and notify the Emergency Services.
- Do not re-enter the building until you are told it is safe to do so by the Emergency Services.

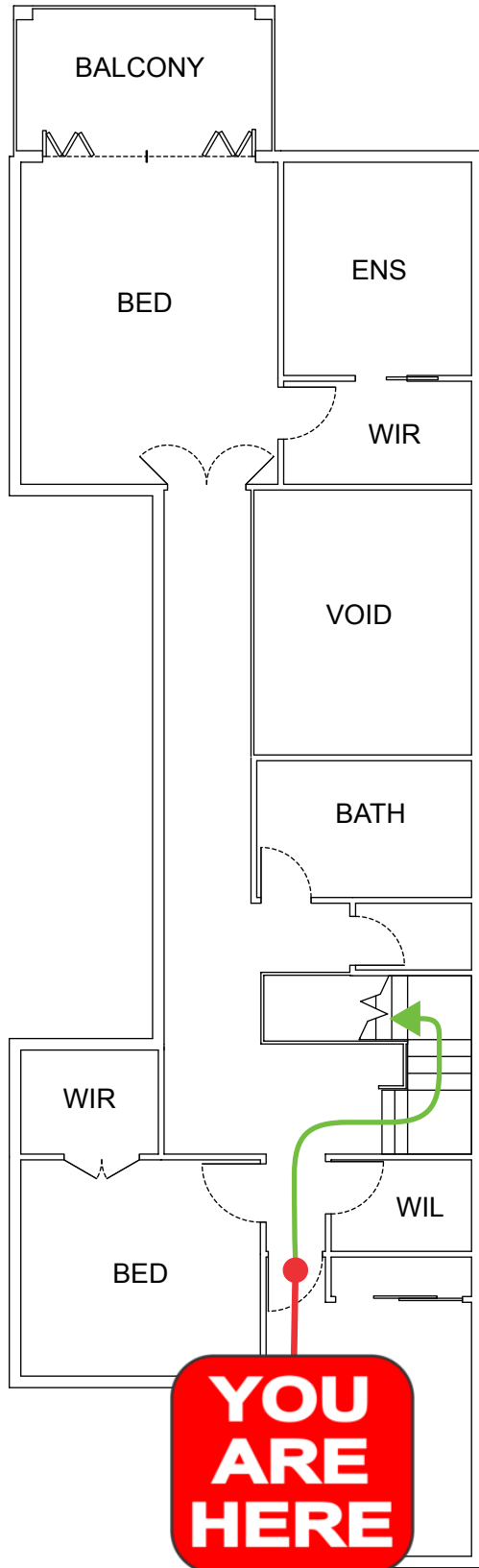
## LEGEND



# EVACUATION DIAGRAM

1/5 CLARA LANE, CASUARINA NSW 2487

## FIRST FLOOR



## IN AN EMERGENCY



EMERGENCY



emergencyplus

Save the app that  
could save your life



triplezero.gov.au

## EMERGENCY EVACUATION PROCEDURE IN CASE OF

### FIRE OR OTHER EMERGENCY

- If you see SMOKE, FLAMES or hear the SMOKE ALARM, alert other occupants immediately.
- If safe, close any windows and doors to confine the fire.
- Leave to the nearest **EXIT** and proceed to the assembly area.
- TELEPHONE **000** and notify the Emergency Services.
- Do not re-enter the building until you are told it is safe to do so by the Emergency Services.



**AUSTRALIAN  
FIRE PROTECTION**

Austfirepro.com.au - 1300 80 FIRE

Preparing People For Emergencies

## LEGEND



Evacuation  
Path