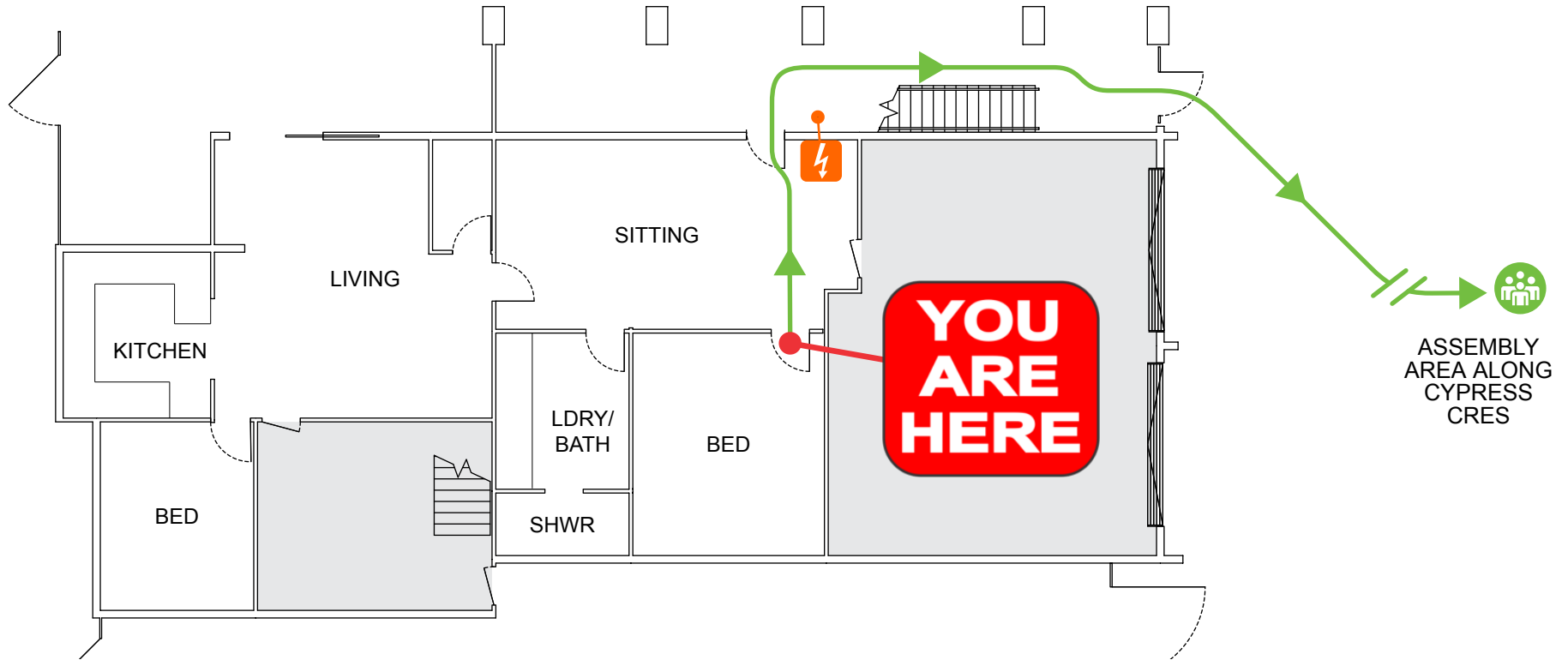


EVACUATION DIAGRAM

4 CYPRESS CRESCENT, CABARITA BEACH NSW 2488



IN AN EMERGENCY



EMERGENCY EVACUATION PROCEDURE IN CASE OF FIRE OR OTHER EMERGENCY

- If you see SMOKE, FLAMES or hear the SMOKE ALARM, alert other occupants immediately.
- If safe, close any windows and doors to confine the fire.
- Leave to the nearest **EXIT** and proceed to the assembly area.
- TELEPHONE **000** and notify the Emergency Services.
- Do not re-enter the building until you are told it is safe to do so by the Emergency Services.

LEGEND



Assembly Area



Switchboard

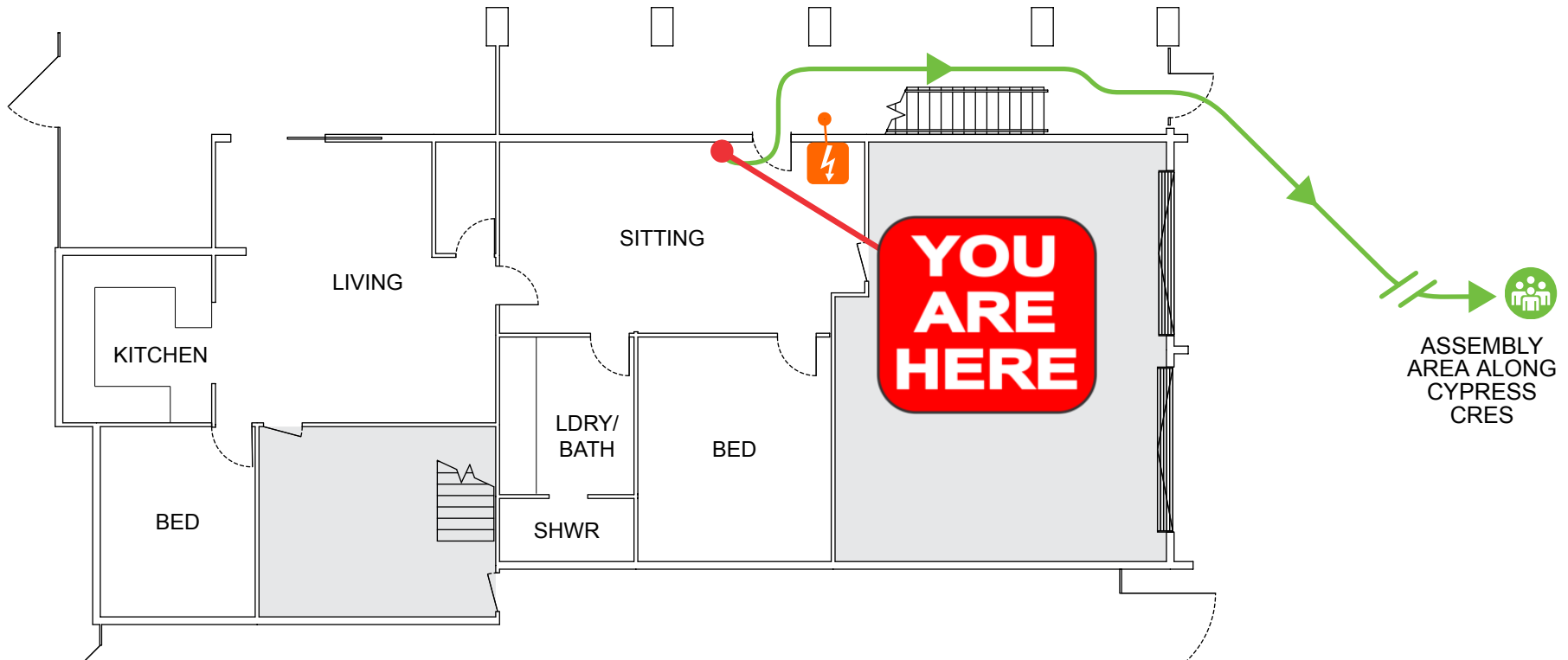


Evacuation Path



EVACUATION DIAGRAM

4 CYPRESS CRESCENT, CABARITA BEACH NSW 2488



IN AN EMERGENCY



EMERGENCY EVACUATION PROCEDURE IN CASE OF FIRE OR OTHER EMERGENCY

- If you see SMOKE, FLAMES or hear the SMOKE ALARM, alert other occupants immediately.
- If safe, close any windows and doors to confine the fire.
- Leave to the nearest **EXIT** and proceed to the assembly area.
- TELEPHONE **000** and notify the Emergency Services.
- Do not re-enter the building until you are told it is safe to do so by the Emergency Services.

LEGEND



Assembly Area



Switchboard

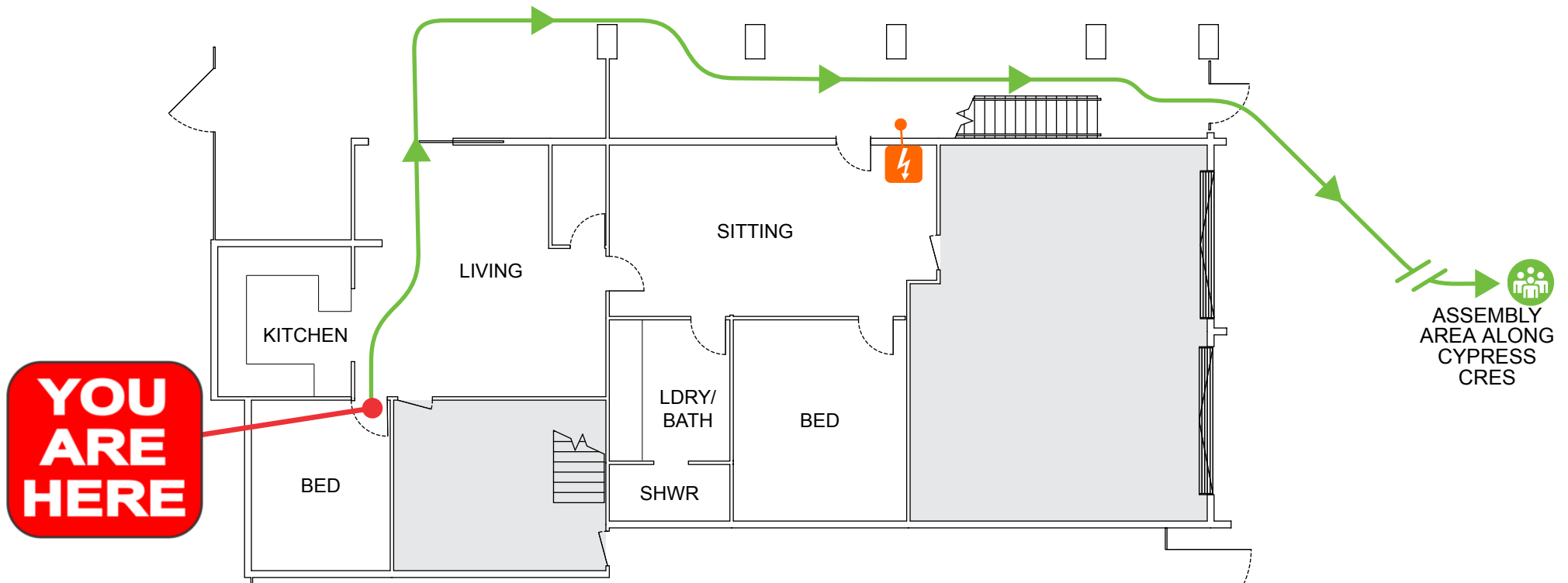


Evacuation Path



EVACUATION DIAGRAM

4 CYPRESS CRESCENT, CABARITA BEACH NSW 2488



IN AN EMERGENCY



EMERGENCY EVACUATION PROCEDURE IN CASE OF FIRE OR OTHER EMERGENCY

- If you see SMOKE, FLAMES or hear the SMOKE ALARM, alert other occupants immediately.
- If safe, close any windows and doors to confine the fire.
- Leave to the nearest **EXIT** and proceed to the assembly area.
- TELEPHONE **000** and notify the Emergency Services.
- Do not re-enter the building until you are told it is safe to do so by the Emergency Services.

LEGEND



Assembly Area



Switchboard



Evacuation Path

